

ROBUSTO

COPPER PRESS



SPECIFICATIONS & INSTALLATION GUIDE

TABLE OF CONTENTS

SECTION 1 - INTRODUCTION	3
SECTION 2 - WHY INSTALL ROBUSTO COPPER PRESS?	4
SECTION 3 - TECH DATA & SPECIFICATION	5
SECTION 4 - CERTIFICATION & TESTING: FITTINGS	6
SECTION 5 - CERTIFICATE OF CONFORMITY	7
SECTION 6 - CERTIFICATION & TESTING: TUBE	8
SECTION 7 - CERTIFICATE OF CONFORMITY	9
SECTION 8 - CLEARANCES BETWEEN FITTINGS	10
SECTION 9 - COPPER TUBE SPECIFICATIONS	11
SECTION 10 - O-RING SELECTION CHART	12
SECTION 11 - COPPER RING FITTINGS LIST	13
SECTION 12 - DN15-50 INSTALLATION INSTRUCTIONS	22
SECTION 13 - DN65-100 INSTALLATION INSTRUCTIONS	23
SECTION 14 - TOOL DESCRIPTIONS COPPER PRESS	24
SECTION 15 - 25 YEAR PRODUCT WARRANTY	25
SECTION 16 - INSURANCE CERTIFICATE	26
SECTION 17 - FAQ	27
SECTION 18 - NOTES	28

SECTION 1. INTRODUCTION



COMPANY OVERVIEW

Robusto Plumbing Systems are manufactured exclusively for Plumbers Co-op by Forza Global The World Force in Plumbing Systems. Robusto Copper Press has a 25 Year Warranty that will prove to be one of the most reliable and economical systems in the Australian and New Zealand market.

Robusto Copper Press is available in sizes DN15 through to DN100 with a range of over 170 different fittings for Water application, over 160 different fittings for Gas application and a full range of fittings for High Temperature Application.

SECTION 2.

WHY INSTALL ROBUSTO COPPER PRESS?



- Robusto Press Copper fittings are suitable to be used on all Hard Drawn, Hard Drawn BQ and Annealed Type A and B Copper Tube that complies with AS1432



- No welding required, eliminating the need for Hot Works permit



- All fittings work with Kempress, Viega and B-Press tooling



- Fittings profile are 'V' which is the most preferred profile by installers



- Largest overall range in the market across Water, Gas and High Temperature fittings



- The double press of each connection both in front and behind the O ring seal



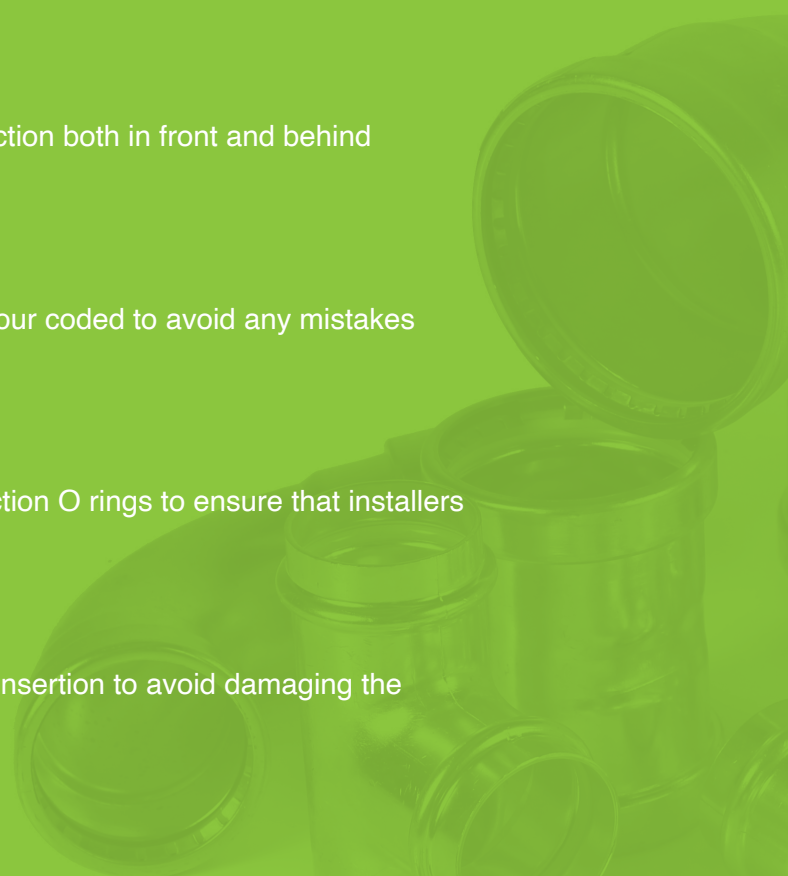
- All fittings and packaging are colour coded to avoid any mistakes upon installation



- Fittings are fitted with Leak detection O rings to ensure that installers can't miss an unpressed fitting



- Fittings allow for cylindrical pipe insertion to avoid damaging the O rings during installation



SECTION 3.

TECH DATA AND SPECIFICATION

FITTINGS APPLICATION



The Robusto Copper Press range exceeds over 340 fittings across Water, Gas and High Temperature. The leak detection O ring feature assures that leakage of liquids and gases will occur if the fitting is not pressed correctly. All fittings DN15-DN50 have leak detection O rings to suit specific installations and cannot be interchanged, all packaging and fittings are colour coded for different types of installation. All fittings DN65-DN100 have O rings and a Stainless-Steel grip ring which reinforces the joint when pressed. All fittings can be installed with Hard Drawn, Hard Drawn BQ and Annealed Type A and B Copper tube that complies with AS1432.

FITTING PRESS PROFILE



The 'V' profile design used by Robusto is the most preferred profile in the market place. Because the fitting is double pressed it gives installers confidence that the connection will be long lasting as the installer can see that the fitting is pressed both in front and behind the O ring. The cylindrical pipe insertion when using 'V' profile fittings gives installers the peace of mind that there won't be any damage to the O ring seal.

APPROVED APPLICATIONS AND OPERATING PARAMETERS



- Potable Water
- Chilled Water
- Hydronic Heating
- Vacuum
- Non-Medical Gases
- Fire Services
- Low Pressure Steam

FITTING	O-RING MATERIAL	PRESSURE RATING KPA	TEMP. °C
WATER	EPDM	1600	120
GAS	HNBR	1600	100
HIGH TEMPERATURE	FKM	1600	200

SECTION 4.

CERTIFICATION & TESTING: FITTINGS

Robusto Copper Press has a Watermark license/certificate and is compliant to AS3688:2016 Water Supply and gas systems- Metallic fittings and end connectors and AS4020.

Below is a list of tests performed to comply with watermark requirements:

WATER FITTINGS



- Leak tightness under internal pressure
- Strength of joint assembly (pressure cycling test)
- Resistance to pull-out of assembled joints
- Leaktightness under internal pressure while subjected to bending
- Method for determining compatibility of water fittings with pipe
- Vacuum test for leaktightness of joints with tube under vacuum
- Resistance of press fitting joints and tubes to vibration

GAS FITTINGS



- Resistance to pull-out of assembled joints
- Leaktightness under internal pressure whilst subjected to bending
- Vacuum test for leaktightness of joints with tube under vacuum
- Leaktightness under internal pneumatic pressure
- Resistance of gas press fittings to temperature cycling
- Resistance of press fitting joints and tubes to vibration
- Resistance of gas press fittings to high temperature

SECTION 5. CERTIFICATE OF CONFORMITY



CERTIFICATE OF CONFORMITY

ApprovalMark International hereby grants:

Forza Global Pty Ltd
2/8 Barclay Road
Derrimut, VIC 3030
AUSTRALIA

WaterMark Certificate of Conformity – WMCS 2016

Evaluated to:

AS/NZS 3688:2016 – Water supply and gas systems – Metallic fittings and end connectors

The WaterMark licensee shall comply with all the terms and conditions as stipulated by the governance of the operating rules of WaterMark and shall comply with standard requirement at all times including when standard is amended. The WaterMark license only covers the product which is identified in the product schedule.

This certificate is issued by a JAS-ANZ accredited certification body. The ABCB and JAS-ANZ do not in any way warrant, guarantee or represent that the product the subject of this Certificate conforms to the WaterMark Certification Scheme Rules, nor accepts any liability arising out of the use of the product. The ABCB disclaims to the extent permitted by law, all liability (including negligence) for claims of losses, expenses, damages, and costs arising as a result of the use of the product(s) referred to in this certificate.

* This certificate may only be reproduced in its entirety.

Certificate No. WM 74718

Issued: 13th April 2024

Originally Certified: 13th April 2017

Expires: 13th April 2027

Current Certification: 13th April 2024

A handwritten signature in black ink, appearing to read "John Prasad".

John PRASAD

Director

ApprovalMark International Pty Ltd
18/33 Holbeche Road, Arndell Park 2148, Australia
www.approvalmark.com



WWW.JAS-ANZ.ORG/REGISTER



ApprovalMark

SECTION 6.

CERTIFICATION & TESTING: TUBE

Robusto Copper tube has a Watermark license/certificate and is compliant to AS1432:2004 – Copper tubes for plumbing, gas fitting and drainage applications and AS/NZS 4020:2005- Testing of products for use in contact with drinking water.

Below is a list of tests performed to comply with watermark requirements :

DIMENSIONS & TOLERANCES



- Mean outside diameter
- Thickness
- Ovality

PERFORMANCE AND TEST METHODS



- Contamination of water (complies with AS/NZS 4020)
- Hardness test
- Internal surface quality
- Watertightness

SECTION 7. CERTIFICATE OF CONFORMITY



CERTIFICATE OF CONFORMITY

ApprovalMark International hereby grants:

Forza Global Pty Ltd
2/8 Barclay Road
Derrimut, VIC 3030
AUSTRALIA

WaterMark Certificate of Conformity – WMCS 2016

Evaluated to:

AS 1432:2004 - Copper tubes for plumbing, gasfitting and drainage applications

The WaterMark licensee shall comply with all the terms and conditions as stipulated by the governance of the operating rules of WaterMark and shall comply with standard requirement at all times including when standard is amended. The WaterMark license only covers the product which is identified in the product schedule.

This certificate is issued by a JAS-ANZ accredited certification body. The ABCB and JAS-ANZ do not in any way warrant, guarantee or represent that the product the subject of this Certificate conforms to the WaterMark Certification Scheme Rules, nor accepts any liability arising out of the use of the product. The ABCB disclaims to the extent permitted by law, all liability (including negligence) for claims of losses, expenses, damages, and costs arising as a result of the use of the product(s) referred to in this certificate.

* This certificate may only be reproduced in its entirety.

Certificate No. WM 74717

Issued: 21st April 2024

Originally Certified: 21st April 2021

Expires: 21st April 2026

Current Certification: 21st April 2024

A handwritten signature in black ink, appearing to read "John Prasad".

John PRASAD

Director

ApprovalMark International Pty Ltd
18/33 Holbeche Road, Arndell Park 2148, Australia
www.approvalmark.com

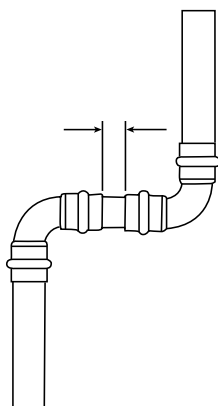


WWW.JAS-ANZ.ORG/REGISTER

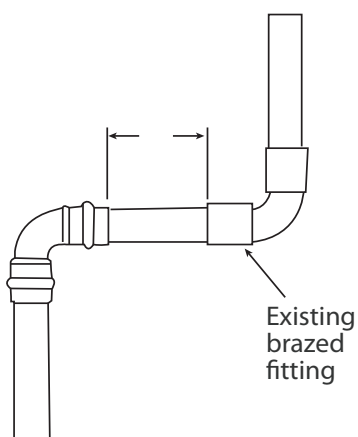


ApprovalMark

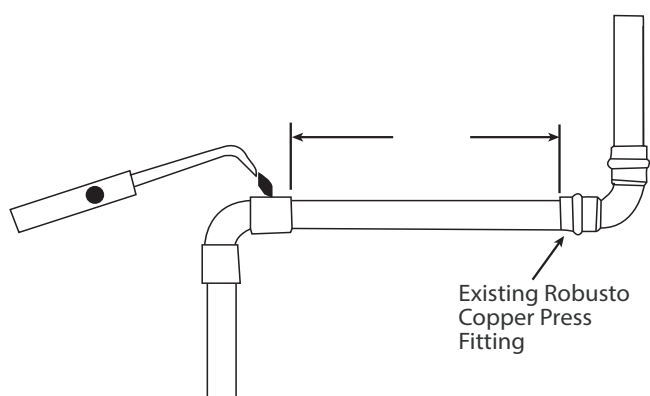
SECTION 8. CLEARANCES BETWEEN FITTINGS



CLEARANCE BETWEEN TWO PRESS FITTINGS	
FITTING SIZE	MINIMUM CLEARANCE MM
DN15	5
DN20	5
DN25	5
DN32	10
DN40	20
DN50	20
DN65	15
DN80	15
DN100	15



CLEARANCE BETWEEN PRESS FITTING AND EXISTING BRAZED FITTING	
FITTING SIZE	MINIMUM CLEARANCE MM
DN15	5
DN20	5
DN25	10
DN32	10
DN40	20
DN50	20
DN65	15
DN80	15
DN100	15



CLEARANCE BETWEEN A NEW BRAZED FITTING AND AN EXISTING PRESS FITTING	
FITTING SIZE	MINIMUM CLEARANCE MM
DN15	350
DN20	500
DN25	650
DN32	800
DN40	1000
DN50	1300
DN65	1650
DN80	2000
DN100	2500

SECTION 9.

COPPER TUBE SPECIFICATIONS

Robusto Copper Press fittings are designed to be used with type A & B copper tube complying with AS1432. This includes hard drawn straight lengths, bendable quality straight lengths and annealed coils.

Robusto Copper Press fittings can also be used on existing AS1432 compliant copper tube. Existing tube must be in reasonable condition. For the tube to be considered as being in reasonable condition the following observations must be made, that there is no surface damage, no signs of external corrosion and the tube should be of its original shape.

The below tables list copper tube that is suitable for use with Robusto Copper Press fittings:

TYPE A									
NOMINAL SIZE	MEAN OD MM		THICKNESS MM			TEMPER	FORM	LENGTH	SAFE WORKING PRESSURE KPA @50°C
	DN	MIN.	MAX.	MIN.	NOMINAL				
15	12.62	12.70	0.88	1.02	1.17	BENDABLE	STRAIGHT	6M	6100
15	12.62	12.70	0.88	1.02	1.17	ANNEALED	COIL	18M	6100
20	18.97	19.05	1.21	1.42	1.63	BENDABLE	STRAIGHT	6M	5560
20	18.97	19.05	1.21	1.42	1.63	ANNEALED	COIL	18M	5560
25	25.30	25.40	1.39	1.63	1.88	HARD DRAWN	STRAIGHT	6M	4750
25	25.30	25.40	1.39	1.63	1.88	ANNEALED	COIL	18M	4750
32	31.65	31.75	1.39	1.63	1.88	HARD DRAWN	STRAIGHT	6M	3750
40	38.00	38.10	1.39	1.63	1.88	HARD DRAWN	STRAIGHT	6M	3100
50	50.67	50.80	1.39	1.63	1.88	HARD DRAWN	STRAIGHT	6M	2310
65	63.35	63.50	1.39	1.63	1.88	HARD DRAWN	STRAIGHT	6M	1840
80	76.02	76.20	1.73	2.03	2.33	HARD DRAWN	STRAIGHT	6M	1900
100	101.35	101.60	1.83	2.03	2.23	HARD DRAWN	STRAIGHT	6M	1500

TYPE B									
NOMINAL SIZE	MEAN OD MM		THICKNESS MM			TEMPER	FORM	LENGTH	SAFE WORKING PRESSURE KPA @50°C
	DN	MIN.	MAX.	MIN.	NOMINAL				
15	12.62	12.70	0.77	0.91	1.05	BENDABLE	STRAIGHT	6M	5290
15	12.62	12.70	0.77	0.91	1.05	ANNEALED	COIL	18M	5290
20	18.97	19.05	0.88	1.02	1.17	BENDABLE	STRAIGHT	6M	3970
20	18.97	19.05	0.88	1.02	1.17	ANNEALED	COIL	18M	3970
25	25.30	25.40	1.04	1.22	1.40	HARD DRAWN	STRAIGHT	6M	3500
25	25.30	25.40	1.04	1.22	1.40	ANNEALED	COIL	18M	3500
32	31.65	31.75	1.04	1.22	1.40	HARD DRAWN	STRAIGHT	6M	2780
40	38.00	38.10	1.04	1.22	1.40	HARD DRAWN	STRAIGHT	6M	2300
50	50.67	50.80	1.04	1.22	1.40	HARD DRAWN	STRAIGHT	6M	1710
65	63.35	63.50	1.04	1.22	1.40	HARD DRAWN	STRAIGHT	6M	1370
80	76.02	76.20	1.39	1.63	1.88	HARD DRAWN	STRAIGHT	6M	1520
100	101.35	101.60	1.47	1.63	1.79	HARD DRAWN	STRAIGHT	6M	1200

O-RING SELECTION CHART

PRESSURE
(KPA)

TEMP.
(°C)

WATER
EPDM

HT
FKM

GAS
HNBR

WATER SUPPLY

HOT AND COLD POTABLE WATER	AUSTRALIAN WATERMARK APPROVED, N.B. WATERMARK CERTIFICATION FOR ALL PLUMBING PRODUCTS IS RESTRICTED 1400KPA AT 95°C	1600	120	●	●	
SOLAR SYSTEMS (FLAT-PANEL COLLECTORS)	SYSTEM CAPABLE OF HANDLING 200°C AS A PEAK TEMPERATURE BUT NOT SUSTAINED TEMPERATURE OVER A PERIOD OF TIME.	1600	120	●	●	
	SYSTEM OPERATES AT A SUSTAINED TEMPERATURE OF 200°	1600	200		●	
CHILLED WATER (CLOSED SYSTEM)	CONTACT ROBUSTO FOR OPEN SYSTEMS (INHIBITORS)	1600	≥-25	●	●	
SPRING WATER	CONTACT ROBUSTO (POSSIBLE WITH DRINKING WATER)	1600	120	●	●	
FIRE SERVICES- FIRE SPRINKLER & HOSE REEL	CAPABLE OF HANDLING THE REQUIRED TEST PRESSURE OF 1700 KPA OR 1.5 TIMES THE DESIGN PRESSURE AS SPECIFIED BY AS2419.1	1600	120	●	●	
STEAM	LOW PRESSURE STEAM EQUIPMENT	≤100	120	●	●	
PUMP CIRCULATED HW SYSTEMS	COMPLIANT WITH EN 12828			●	●	

ANTI-FREEZE / CORROSION PROTECTION / INHIBITORS

	PRODUCT	MANUFACTURER	PRESSURE (KPA)	TEMP. (°C)	WATER EPDM	HT FKM	GAS HNBR
ANTI-FREEZE COOLING CONCENTRATION 50%	ETHYLENE GLYCOL	VARIOUS	1600	-25 TO 120	●	●	
	PROPYLENE GLYCOL	VARIOUS	1600	-25 TO 120	●	●	
	ANTIFROGEN N	CLARIANT	1600	-25 TO 120	●	●	
	ANTIFROGEN L	CLARIANT	1600	-25 TO 120	●	●	
	TYFOCOR	TYFOROP-CHEMIE	1600	-25 TO 120	●	●	
	TYFOCOR L	TYFOROP-CHEMIE	1600	-25 TO 120	●	●	

OTHER MEDIA

ETHANOL		1600	25	●	●	
ACETONE	LIQUID	500	-10 TO 40	●	●	
CONDENSATE	STEAM EQUIPMENT	1600	110	●	●	
LEAKAGE INDICATOR LIQUID FOR OIL TANKS	BRENNTAG R 36522	100	-20 TO 30	●	●	

NATURAL GAS/ LPG

NATURAL GAS	AUSTRALIAN GAS APPROVED, N.B. AS/NZS5601 PERMITS USE UP TO 200 KPA FOR ALL SYSTEMS.	200	100			●
LPG	AUSTRALIAN GAS APPROVED, N.B. AS/NZS5601 PERMITS USE UP TO 200 KPA FOR ALL SYSTEMS	200	100			●

OILS, COOLING MATERIALS AND LUBRICANTS

ENGINE OILS AND LUBRICANTS (PETROLEUM-BASED SAE)	CONSULTATION REQUIRED	1000	70			●
HEATING OIL, DIESEL IN ACC. WITH EN590		500	40			●

OTHER GAS

OXYGEN	OIL AND FAT FREE	1200	60	●	●	●
CARBOGEN	CO ₂ + O ₂ DRY	1600	70	●		●
ARGON	FOR WELDING	1600	AMBIENT	●		●
COMPRESSED AIR	OIL CONCENTRATION ≤25 MG/M ³	1600	70	●	●	
	OIL CONCENTRATION ≥25 MG/M ³	1600	70			●
CARBON DIOXIDE – CO ₂	DRY	1600	70	●	●	●
CARBON MONOXIDE – CO	STAINLESS STEEL COMPONENTS NOT PERMITTED	1600	70	●	●	●
NITROGEN – N ₂	AFTER THE EVAPORATOR	1600	70	●	●	●
HYDROGEN – H ₂	WILL LEAK AT <0.001 CM ³ /MINUTE	500	70	●	●	●
FORMING GAS/WELDING GAS	80% ARGON / 20% CO ₂	1600	70	●	●	●
LOW VACUUM	P _{ABS} = 1MBAR			●	●	●
HELIUM – HE ₂		1600	70	●	●	●
XENON		1600	70	●	●	●
NEON		1600	70	●	●	●
KRYPTON		1600	70	●	●	●

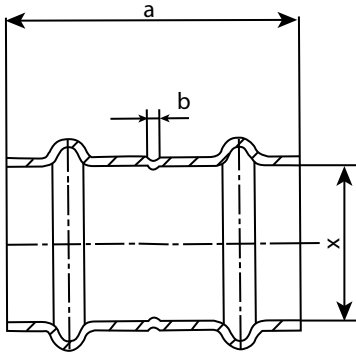
NOT SUITABLE FOR: Refrigeration and Air Conditioning Applications, Acetylene, Urea Solution, Methanol, Glycerine Triacetate, Coolant Inhibitor, Sodium Hydroxide, Ammoniac (gaseous), Medical Gas Applications.

EPDM - Ethylene Propylene Diene Monomer

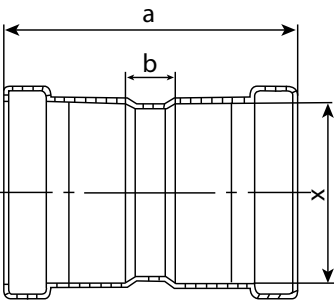
FKM - Fluorocarbon Rubber

HNBR - Hydrogenated Nitrile Butadiene Rubber

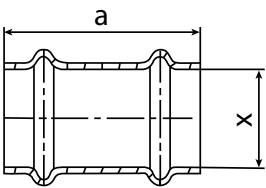
SECTION 11. COPPER PRESS FITTINGS LIST



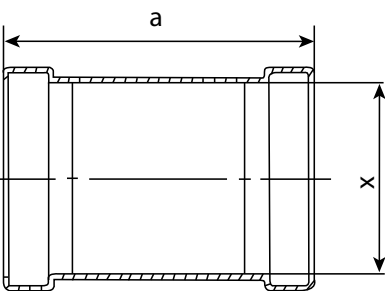
COUPLING						
DN	WATER PART NO. & CODE	GAS PART NO. & CODE	HT PART NO. & CODE	a	b	x
15MM	165001 RCPWC15	167001 RCPGC15	166101 RCPHTC15	38	2	15
20MM	165002 RCPWC20	167002 RCPGC20	166102 RCPHTC20	47	2	20
25MM	165003 RCPWC25	167003 RCPGC25		48	2	25
32MM	165004 RCPWC32	167004 RCPGC32		54	3	32
40MM	165005 RCPWC40	167005 RCPGC40		66	3	40
50MM	165006 RCPWC50	167006 RCPGC50		82	3	50



COUPLING						
DN	WATER PART NO. & CODE	GAS PART NO. & CODE	HT PART NO. & CODE	a	b	x
65MM	165007 RCPWC65	167007 RCPGC65		108	20	65
80MM	165008 RCPWC80	167008 RCPGC80		122	20	80
100MM	165009 RCPWC100	167009 RCPGC100		148	28	100



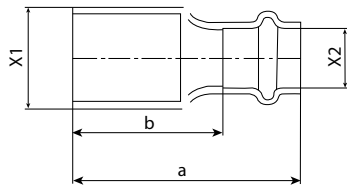
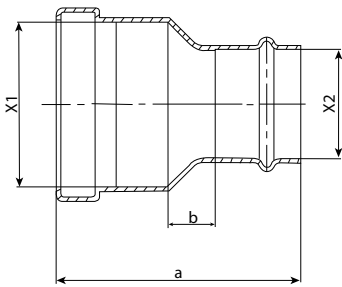
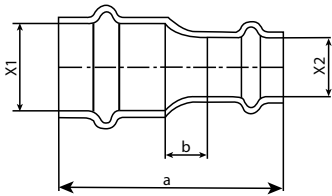
SLIP COUPLING						
DN	WATER PART NO. & CODE	GAS PART NO. & CODE	HT PART NO. & CODE	a		x
15MM	165020 RCPWSLC15	167020 RCPGSLC15	166105 RCPHTSLC15	38		15
20MM	165021 RCPWSLC20	167021 RCPGSLC20	166106 RCPHTSLC20	50		20
25MM	165022 RCPWSLC25	167022 RCPGSLC25	164990 RCPHTSLC25	50		25
32MM	165023 RCPWSLC32	167023 RCPGSLC32		58		32
40MM	165024 RCPWSLC40	167024 RCPGSLC40		66		40
50MM	165025 RCPWSLC50	167025 RCPGSLC50		82		50



SLIP COUPLING						
DN	WATER PART NO. & CODE	GAS PART NO. & CODE	HT PART NO. & CODE	a		x
65MM	165026 RCPWSLC65	167026 RCPGSLC65		108		65
80MM	165027 RCPWSLC80	167027 RCPGSLC80		122		80
100MM	165028 RCPWSLC100	167028 RCPGSLC100		148		100

SECTION 11.

COPPER PRESS FITTINGS LIST

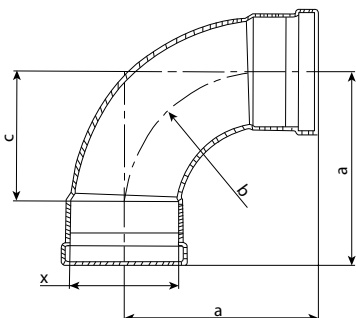
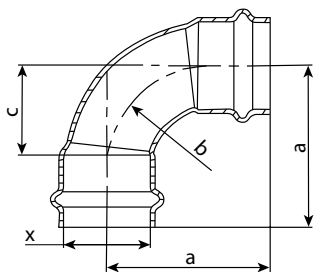
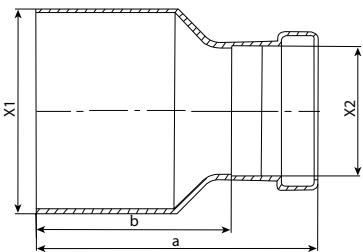
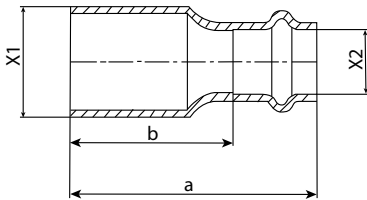


REDUCING COUPLING						
DN	WATER PART NO. & CODE	GAS PART NO. & CODE	a	b	X1	X2
20-15	165160 RCPWRC2015	163160 RCPGRC2015	48.5	9	20	15
25-15	165161 RCPWRC2515	163161 RCPGRC2515	55	15.5	25	15
25-20	165162 RCPWRC2520	163162 RCPGRC2520	54	8	25	20
32-25	165163 RCPWRC3225	163163 RCPGRC3225	58	9	32	25
40-25	165164 RCPWRC4025	163164 RCPGRC4025	68	13.5	40	25
40-32	165165 RCPWRC4032	163165 RCPGRC4032	67	9	40	32
50-25	165166 RCPWRC5025	163166 RCPGRC5025	84	21	50	25
50-32	165167 RCPWRC5032	163167 RCPGRC5032	83	17	50	32
50-40	RCPWRC5040	RCPGRC5040	85	13	50	40

REDUCING COUPLING						
PART NO	WATER PART NO. & CODE	GAS PART NO. & CODE	a	b	X1	X2
65-32	165169 RCPWRC6532	167169 RCPGRC6532	94	25	65	32
65-40	RCPWRC6540	RCPGRC6540				
65-50	165171 RCPWRC6550	167171 RCPGRC6550	100	17	65	50
80-40	167172 RCPWRC8040	167173 RCPGRC8040				
80-50	165173 RCPWRC8050	167173 RCPGRC8050	114	22	80	50
80-65	167174 RCPWRC8065	167175 RCPGRC8065				
100-50	RCPWRC10050	RCPGRC10050				
100-65	165176 RCPWRC10065	167176 RCPGRC10065				
100-80	165177 RCPWRC10080	167177 RCPGRC10080				

REDUCER						
DN	WATER PART NO. & CODE	GAS PART NO. & CODE	a	b	X1	X2
20-15	165190 RCPWRMF2015	167190 RCPGRMF2015	50	33.5	20	15
25-15	165191 RCPWRMF2515	167191 RCPGRMF2515	55	38.5	25	15
25-20	165192 RCPWRMF2520	167192 RCPGRMF2520	55	32	25	20
32-20	165193 RCPWRMF3220	167193 RCPGRMF3220	64	41	32	20
32-25	165194 RCPWRMF3225	167194 RCPGRMF3225	62	39	32	25
40-20	165335 RCPWRMF4020	167325 RCPGRMF4020	73	50	40	20
40-25	165195 RCPWRMF4025	167195 RCPGRMF4025	71	48	40	25
40-32	165196 RCPWRMF4032	167196 RCPGRMF4032	69	42	40	32
50-25	165197 RCPWRMF5025	167197 RCPGRMF5025	85	62	50	25
50-32	165198 RCPWRMF5032	167198 RCPGRMF5032	86	60	50	32
50-40	165199 RCPWRMF5040	167199 RCPGRMF5040	88	56	50	40

SECTION 11. COPPER PRESS FITTINGS LIST



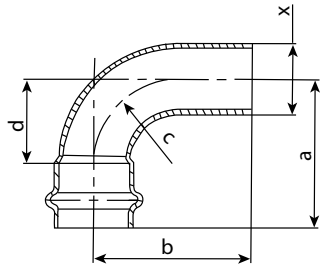
REDUCER						
DN	WATER PART NO. & CODE	GAS PART NO. & CODE	a	b	X1	X2
65-40	165200 RCPWRMF6540	167200 RCPGRMF6540	102	70	65	40
65-50	165201 RCPWRMF6550	167201 RCPGRMF6550	104	64	65	50
80-40	165336 RCPWRMF8040	167326 RCPGRMF8040	120	88	80	40
80-50	165202 RCPWRMF8050	167202 RCPGRMF8050	120	80	80	50

REDUCER						
DN	WATER PART NO. & CODE	GAS PART NO. & CODE	a	b	X1	X2
80-65MM	165203 RCPWRMF8065	167203 RCPGRMF8065	118	75	80	65
100-50MM	165204 RCPWRMF10050	167204 RCPGRMF10050	142	102	100	50
100-65MM	165205 RCPWRMF10065	167147 RCPGRMF10065	140	97	100	65
100-80MM	165206 RCPWRMF10080	167206 RCPGRMF10080	144	92	100	80

ELBOW							
DN	WATER PART NO. & CODE	GAS PART NO. & CODE	HT PART NO. & CODE	a	b	c	x
15MM	165030 RCPWE15	167030 RCPGE15	162115 RCPHTE15	30	15.2	13.5	15
20MM	165031 RCPWE20	167031 RCPGE20	162116 RCPHTE20	42	22.8	19	20
25MM	165032 RCPWE25	167032 RCPGE25	167288 RCPHTE25	53.5	30.5	30.5	25
32MM	165033 RCPWE32	167033 RCPGE32		59	38.2	33	32
40MM	165034 RCPWE40	167034 RCPGE40		76	45.7	44.5	40
50MM	165035 RCPWE50	167035 RCPGE50		97	61	57	50

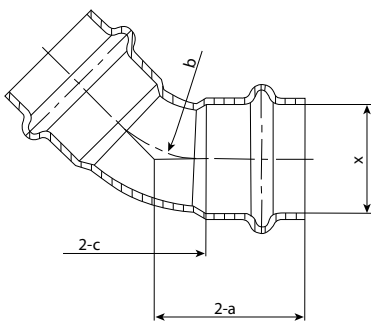
ELBOW						
DN	WATER PART NO. & CODE	GAS PART NO. & CODE	a	b	c	x
65MM	165036 RCPWE65	167036 RCPGE65	121	76.4	76.4	65
80MM	165037 RCPWE80	167037 RCPGE80	147	95.1	95	80
100MM	165038 RCPWE100	167038 RCPGE100	180	132.1	120	100

SECTION 11. COPPER PRESS FITTINGS LIST

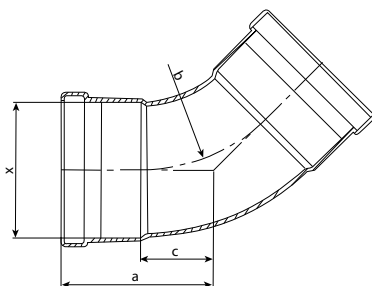


ELBOW M + F							
DN	WATER PART NO. & CODE	GAS PART NO. & CODE	a	b	c	d	x
15MM	165050 RCPWEMF15	167050 RCPGEMF15	30	36	15.2	13.5	15
20MM	165051 RCPWEMF20	167051 RCPGEMF20	42	48	22.8	19	20
25MM	165052 RCPWEMF25	167052 RCPGEMF25	53.5	56.5	30.5	30.5	25
32MM	165053 RCPWEMF32	167053 RCPGEMF32	64.2	66.2	38.2	38.2	32
40MM	165054 RCPWEMF40	167054 RCPGEMF40	76	79.7	45.7	44.5	40
50MM	165055 RCPWEMF50	167055 RCPGEMF50	97	103	61	57	50

ELBOW M + F							
DN	WATER PART NO. & CODE	GAS PART NO. & CODE	a	b	c	d	x
15MM	165056 RCPWEMF65	167056 RCPGEMF65	121	126.2	76.4	76.4	65
20MM	165057 RCPWEMF80	167057 RCPGEMF80	147	155.1	95.1	95	80
25MM	165058 RCPWEMF100	167058 RCPGEMF100	180	196.5	132.1	120	100

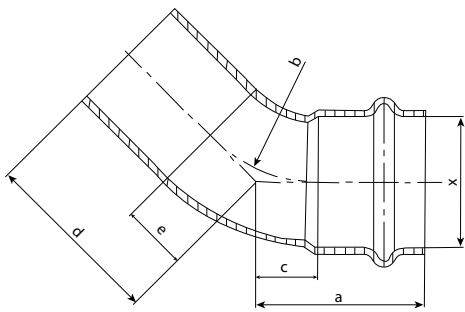


45° ELBOW							
DN	WATER PART NO. & CODE	GAS PART NO. & CODE	a	b	c	x	
15MM	165070 RCPW45E15	167070 RCPG45E15	24	15.2	7.5		15
20MM	165071 RCPW45E20	167071 RCPG45E20	31.4	22.8	8.4		20
25MM	165072 RCPW45E25	167072 RCPG45E25	35	30.5	12		25
32MM	165073 RCPW45E32	167073 RCPG45E32	31	38.2	15		32
40MM	165074 RCPW45E40	167074 RCPG45E40	50.4	45.7	18.9		40
50MM	165075 RCPW45E50	167075 RCPG45E50	65.3	61	25.3		50



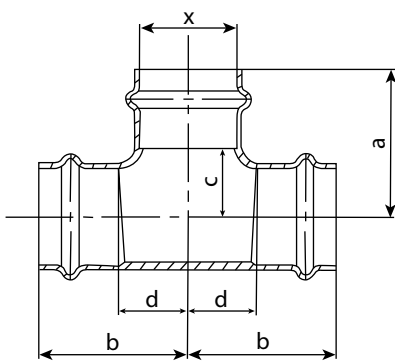
45° ELBOW							
DN	WATER PART NO. & CODE	GAS PART NO. & CODE	a	b	c	x	
65MM	165076 RCPW45E65	167076 RCPG45E65	75.5	76.4	31.6		65
80MM	165077 RCPW45E80	167077 RCPG45E80	89.2	95.1	37.2		80
100MM	165078 RCPW45E100	167078 RCPG45E100	114.7	132.1	54.7		100

SECTION 11. COPPER PRESS FITTINGS LIST

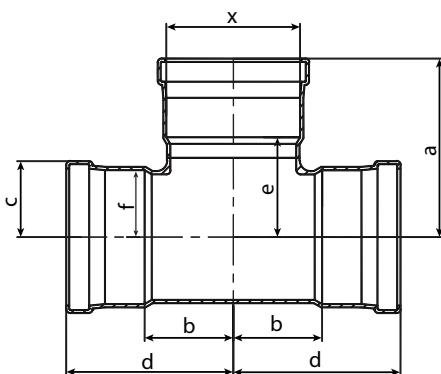


45° ELBOW M + F								
DN	WATER PART NO. & CODE	GAS PART NO. & CODE	a	b	c	d	e	x
15MM	165090 RCPW45EMF15	167090 RCPG45EMF15	24	15.2	7.5	27.3	6.3	15
20MM	165091 RCPW45EMF20	167091 RCPG45EMF20	31.4	22.8	8.4	34.5	9.5	20
25MM	165092 RCPW45EMF25	167092 RCPG45EMF25	35	30.5	12	37.6	12.6	25
32MM	165093 RCPW45EMF32	167093 RCPG45EMF32	31	38.2	15	43.8	15.8	32
40MM	165094 RCPW45EMF40	167094 RCPG45EMF40	50.4	45.7	18.9	52.4	18.9	40
50MM	165095 RCPW45EMF50	167095 RCPG45EMF50	65.3	61	25.3	67.3	25.3	50

45° ELBOW M + F								
DN	WATER PART NO. & CODE	GAS PART NO. & CODE	a	b	c	d	e	x
65MM	165056 RCPW45EMF65	167096 RCPG45EMF65	24	15.2	7.5	27.3	6.3	15
80MM	165057 RCPW45EMF80	167097 RCPG45EMF80	31.4	22.8	8.4	34.5	9.5	20
100MM	165058 RCPW45EMF100	167098 RCPG45EMF100	35	30.5	12	37.6	12.6	25

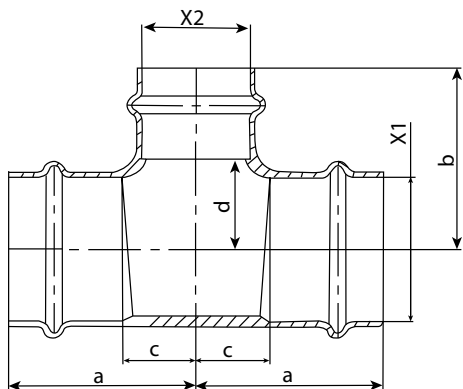


EQUAL TEE								
DN	WATER PART NO. & CODE	GAS PART NO. & CODE	HT PART NO. & CODE	a	b	c	d	x
15MM	161110 RCPWET15	167110 RCPGET15	166120 RCPHTET15	28	31	11.5	14.5	15
20MM	161111 RCPWET20	167111 RCPGET20	166121 RCPHTET20	36	39	13	15.1	20
25MM	161112 RCPWET25	167112 RCPGET25		41.5	43	18.5	19.1	25
32MM	161113 RCPWET32	167113 RCPGET32		48.5	48.5	22.5	22.5	32
40MM	161114 RCPWET40	163114 RCPGET40		57	57	25.5	25.5	40
50MM	165115 RCPWET50	167115 RCPGET50		71	71	31	31	50

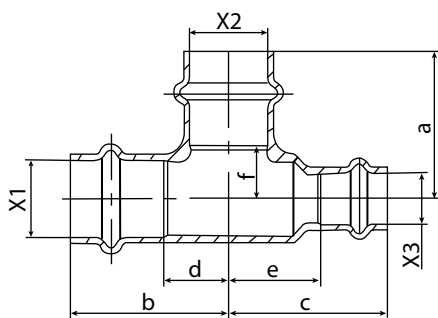


EQUAL TEE LARGE									
DN	WATER PART NO. & CODE	GAS PART NO. & CODE	a	b	c	d	e	f	x
65MM	161115 RCPWET65	167115 RCPGET65	97.8	44.4	39.1	89	54.8	34.3	65
80MM	161116 RCPWET80	167116 RCPGET80	112	48	45.1	100	60.8	40.5	80
100MM	161117 RCPWET100	167117 RCPGET100	136.2	68	58	128	76.2	53.7	100

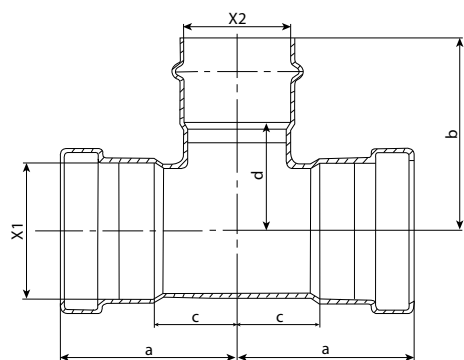
SECTION 11. COPPER PRESS FITTINGS LIST



REDUCING TEE								
DN	WATER PART NO. & CODE	GAS PART NO. & CODE	a	b	c	d	x1	x2
20X20X(15)	165130 RCPWRT202015	167130 RCPGRT202015	36.5	32	13.5	15.5	20	15
25X25X(15)	165133 RCPWRT252515	167133 RCPGRT252515	36.5	35.5	13.5	19	25	15
25X25X(20)	165134 RCPWRT252520	167134 RCPGRT252520	39.5	40.5	16.5	17.5	25	20
32X32X(15)	165135 RCPWRT323215	167135 RCPGRT323215	40	39.5	14	23	32	15
32X32X(20)	165136 RCPWRT323220	167136 RCPGRT323220	43.5	43.5	17.5	20.5	32	20
32X32X(25)	165137 RCPWRT323225	167137 RCPGRT323225	48.5	45.5	22.5	22.5	32	25
40X40X(20)	165138 RCPWRT404020	167138 RCPGRT404020	46.5	47.5	14.5	24.5	40	20
40X40X(25)	165139 RCPWRT404025	167139 RCPGRT404025	51.5	50.5	19.5	27.5	40	25
40X40X(32)	165140 RCPWRT404032	167140 RCPGRT404032	55	52	23.5	26	40	32
50X50(20)	165338 RCPWRT505020	167328 RCPGRT505020	57	56	19.5	34.5	50	20
50X50X(25)	165141 RCPWRT505025	167141 RCPGRT505025	59.5	57.5	19.5	34.5	50	25
50X50X(32)	167339 RCPWRT505032	167329 RCPGRT505032	62.5	59.5	22.5	33.5	50	32
50X50X(40)	165142 RCPWRT505040	167142 RCPGRT505040	66	64	26	32	50	40

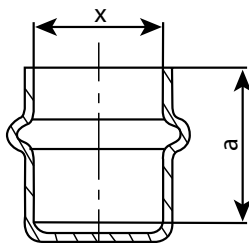


REDUCING TEE											
DN	WATER PART NO. & CODE	GAS PART NO. & CODE	a	b	c	d	e	f	x1	x2	x3
20X15X(20)	165131 RCPWRT201520	167131 RCPGRT201520	36	39	39	16	22.5	13	20	20	15
20X15X(15)	165132 RCPWRT201515	167132 RCPGRT201515	32	36.5	36.3	13.5	19.8	15.5	20	15	15

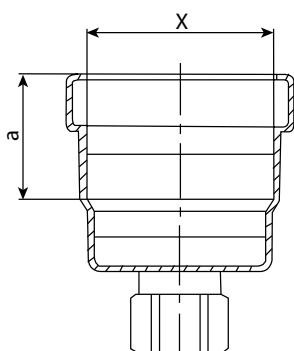


REDUCING TEE								
DN	WATER PART NO. & CODE	GAS PART NO. & CODE	a	b	c	d	x1	x2
65X65X(50)	165143 RCPWRT656550	167143 RCPGRT656550	84	92	41	52	65	50
80X80X(50)	165144 RCPWRT808050	167144 RCPGRT808050	89	98	37	58	80	50
80X80X(65)	165145 RCPWRT808065	167145 RCPGRT808065	93	104	41	61	80	65

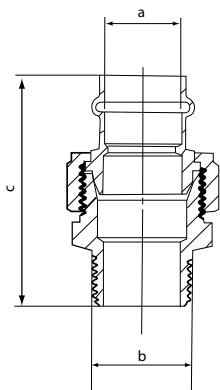
SECTION 11. COPPER PRESS FITTINGS LIST



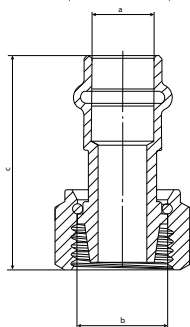
END CAP					
DN	WATER PART NO. & CODE	GAS PART NO. & CODE	HT PART NO & CODE	a	x
15MM	165220 RCPWEC15	167220 RCPGEC15	162125 RCPHTEC15	16.5	15
20MM	165221 RCPWEC20	167221 RCPGEC20	166126 RCPHTEC20	23	20
25MM	165222 RCPWEC25	167222 RCPGEC25	165210 RCPHTEC25	23	25
32MM	165223 RCPWEC32	167223 RCPGEC32		26	32
40MM	165224 RCPWEC40	167224 RCPGEC40		32	40
50MM	165225 RCPWEC50	167225 RCPGEC50		40	50



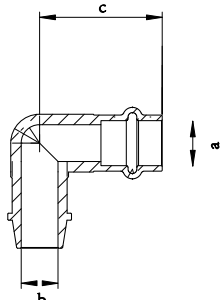
END CAP					
DN	WATER PART NO. & CODE	GAS PART NO. & CODE	a	x	
65MM	165226 RCPWEC65	167226 RCPGEC65	43	65	
80MM	165227 RCPWEC80	167227 RCPGEC80	52	80	
100MM	165228 RCPWEC100	167228 RCPGEC100	60	100	



SWIVEL UNION MALE					
DN	WATER PART NO. & CODE	GAS PART NO. & CODE	a	b	c
25MM	165297 RCPWMSU2525	167317 RCPGMSU2525	25.8	1"	78
32MM	165298 RCPWMSU3232	167318 RCPGMSU3232	32.2	1-1/4"	80
40MM	165299 RCPWMSU4040	167319 RCPGMSU4040	38.5	1-1/2"	88.5
50MM	161300 RCPWMSU5050	167320 RCPGMSU5050	51.3	2"	104

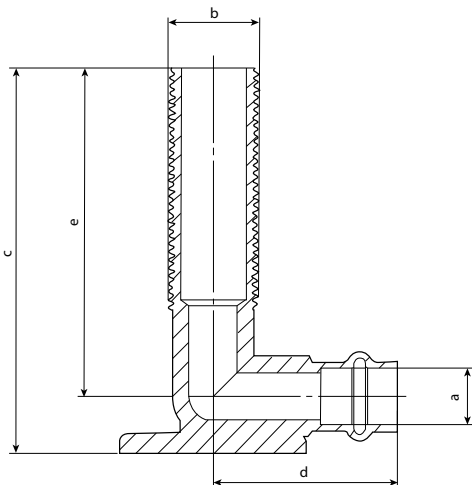


SWIVEL NUT CONNECTOR					
DN	WATER PART NO. & CODE	GAS PART NO. & CODE	a	b	c
15MM	165285 RCPWSNF1515	167285 RCPGSNF1515	12.85	G1/2-14	44
20MM	165286 RCPWSNF2020	167286 RCPGSNF2020	19.25	G3/4-14	53.6

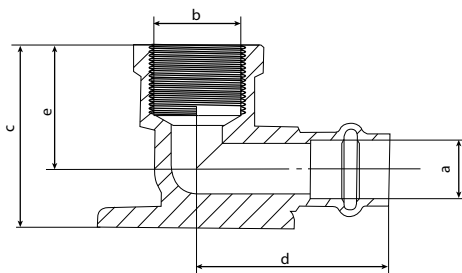


SWIVEL NUT ELBOW					
DN	WATER PART NO. & CODE	GAS PART NO. & CODE	a	b	c
15MM	165290 RCPWSNE1515	167290 RCPGSNE1515	12.85	1/2"	35
20MM	165291 RCPWSNE2020	167291 RCPGSNE2020	19.25	3/4"	53.6

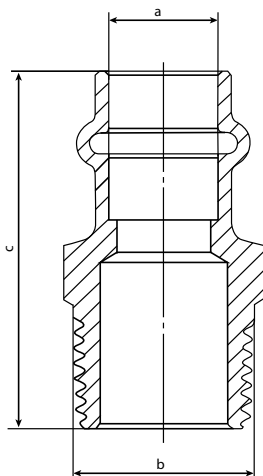
SECTION 11. COPPER PRESS FITTINGS LIST



MALE LUGGED ELBOW							
DN	WATER PART NO. & CODE	GAS PART NO. & CODE	a	b	c	d	e
1/2" X 75MM	165278 RCPWWM151575	167278 RCPGWM151575	12.85	1/2"	88	42	75
1/2" X 90MM	165249 RCPWWM151590	167249 RCPGWM151590	12.85	1/2"	103	42	90
1/2" X 75MM	165280 RCPWWM151575B	165281 RCPGWM151575	12.85	1/2"	75	35	75
1/2" X 90MM	167281 RCPWWM151590B	167281 RCPGWM151590B	12.85	1/2"	88	35	90



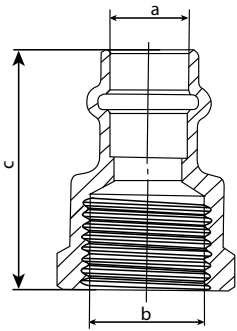
FEMALE LUGGED ELBOW							
DN	WATER PART NO. & CODE	GAS PART NO. & CODE	a	b	c	d	e
15MM	165268 RCPWWF1515	167268 RCPGWF1515	12.85	1/2"	40	42	27
20-15	165340 RCPWWF2015	165340 RCPGWF2015	19.25	1/2"	43.5	46	29.5
20MM	165269 RCPWWF2020	167273 RCPGWF2020	19.25	3/4"	43.5	46	29.5



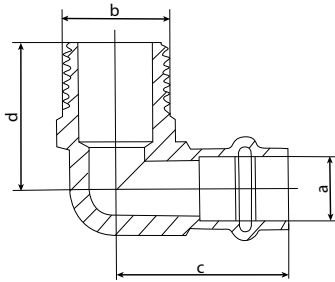
MALE STRAIGHT CONNECTOR						
DN	WATER PART NO. & CODE	GAS PART NO. & CODE	HT PART NO. & CODE	a	b	c
15MM	165245 RCPWMSC1515	167245 RCPGMSC1515	166134 RCPHTMSC1515	12.85	1/2"	42
15-20MM	165246 RCPWMSC1520	167246 RCPGMSC1520	166136 RCPHTMSC1520			
20MM	165248 RCPWMSC2020	167248 RCPGMSC2020	166135 RCPHTMSC2020	19.25	3/4"	48
25MM	165247 RCPWMSC2525	167250 RCPGMSC2525	165230 RCPHTMSC2525	25.8	1"	52.5
32MM	165248 RCPWMSC3232	167251 RCPGMSC3232		32.2	1-1/4"	56.5
40MM	165252 RCPWMSC4040	167252 RCPGMSC4040		38.5	1-1/2"	64.5
50MM	165253 RCPWMSC5050	167253 RCPGMSC5050		51.3	2"	78
15-3/4"	165246 RCPWMSC1520	167246 RCPGMSC1520		12.85	3/4"	16
20-1/2"	165247 RCPWMSC2015	167247 RCPGMSC2015		19.25	1/2"	44.5
25-3/4"	165248 RCPWMSC2520	167249 RCPGMSC2520		25.8	3/4"	47

MALE STRAIGHT CONNECTOR						
DN	WATER PART NO. & CODE	GAS PART NO. & CODE	a	b	c	d
65MM	165320 RCPWMSC6565	RCPGMSC6565	66.5	74.5	2-1/2"	93
80MM	165321 RCPWMSC8080	RCPGMSC8080	78.5	86.5	3"	100

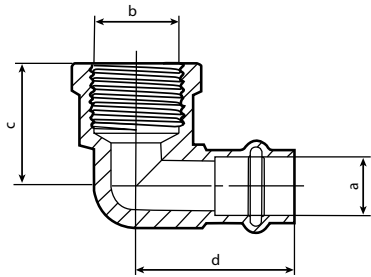
SECTION 11. COPPER PRESS FITTINGS LIST



FEMALE STRAIGHT CONNECTOR						
DN	WATER PART NO. & CODE	GAS PART NO. & CODE	HT PART NO. & CODE	a	b	c
15MM	165235 RCPWFSC1515	167235 RCPGFSC1515	166132 RCPHTFSC1515	12.85	1/2"	39
20MM	165236 RCPWFSC2020	167236 RCPGFSC2020	166133 RCPHTFSC2020	19.25	3/4"	44
25MM	165237 RCPWFSC2525	167237 RCGFSC2525		25.8	1"	48
32MM	165238 RCPWFSC3232	167238 RCPGFSC3232		32.2	1-1/4"	52
40MM	165239 RCPWFSC4040	167239 RCPGFSC4040		38.5	1-1/2"	58
50MM	161240 RCPWFSC5050	163240 RCPGFSC5050		51.3	2"	70.5
65MM	165329 RCPWFSC6565	165329 RCPGFSC6565				



MALE ELBOW						
DN	WATER PART NO. & CODE	GAS PART NO. & CODE	a	b	c	d
15 - 1/2"	165330 RCPWME1515	167316 RCPGME1515	12.85	1/2"	34	29
20-3/4"	165258 RCPWME2020	167258 RCPGME2020	19.25	3/4"	40.5	34



FEMALE ELBOW						
DN	WATER CODE NO. & CODE	GAS CODE NO. & CODE	a	b	c	d
15-1/2"	165327 RCPWFE1515	165262 RCPWFE1515	12.85	1/2"	27	35
20-3/4"	165262 RCPWFE2020	167262 RCPGFE2020	19.25	3/4"	31	42
20-1/2"	165328 RCPWFE2015	167315 RCPGFE2015	19.25	1/2"	30	40

FLANGE ADAPTER					
DN	WATER CODE NO. & CODE	GAS CODE NO. & CODE	a	b	c
40MM	RCPWFA40	RCPGFA40	38.5	135	79
50MM	RCPWFA50	RCPGFA50	51.3	150	86
65MM	RCPWFA65	RCPGFA65			
80MM	RCPWFA80	RCPGFA80			
100MM	RCPWFA100	RCPGFA100			

SECTION 12.

ROBUSTO COPPER PRESS

DN15-50 INSTALLATION INSTRUCTIONS

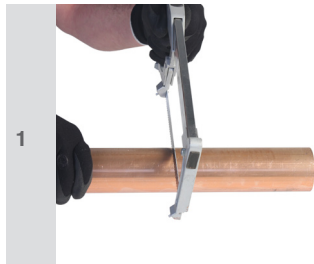
The following instructions explain the correct installation procedure for Robusto copper press fittings with copper tube that complies with AS1432.

 <p>1</p>	<p>With the use of a tube cutter, cut copper tube to the desired length.</p>	 <p>6</p>	<p>When tube is inserted mark should line up with back of fitting.</p>
 <p>2</p>	<p>Next using a deburring tool, deburr the end of the tube that will be inserted into the fitting.</p>	 <p>7</p>	<p>Insert the correct size press jaw for the size of fitting being pressed. Ensure jaw is clean and moves freely.</p>
 <p>3</p>	<p>If connecting to existing copper tube to AS1432. Ensure tube is clean by way of soft scourer or emery paper.</p>	 <p>8</p>	<p>Line up the jaw of the tool so the centre of the jaw lines up with the raised section of the fitting.</p>
 <p>4</p>	<p>Check that you have the correct fitting for the application. Water will have a black 'O' ring, gas will have a yellow 'O' ring and High temp. will have a red 'O' ring.</p>	 <p>9</p>	<p>Press the trigger on the tool, hold down until jaws fully close and an audible click is heard. This completes the pressing process.</p>
 <p>5</p>	<p>Line up tube with fitting and place a mark on the tube at the correct insertion depth.</p>	 <p>10</p>	<p>Inspect fitting to ensure press is complete.</p>

SECTION 13.

ROBUSTO COPPER PRESS

DN65-100 INSTALLATION INSTRUCTIONS



Using a fine tooth saw or tube cutter, cut copper tube to the desired length.



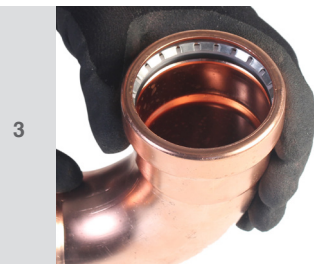
Select the correct sized collar, making sure that pressing area is clean and smooth.



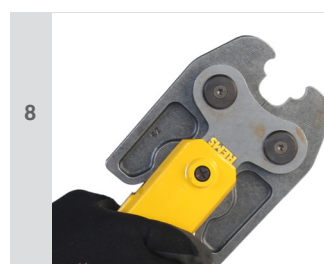
Using a smooth file deburr and clean the end of the tube both internally and externally to minimise turbulence and pressure loss. This will also avoid damage to the O-ring.



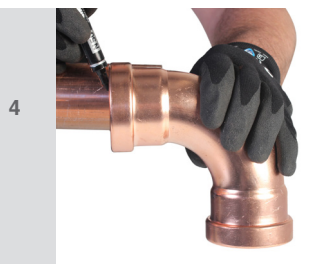
Place the collar over the fitting and check that the fitting sits squarely inside the pressing area of collar.



Check fitting to ensure it is suitable for the application. Confirm that fitting is clean and the O-ring and stainless grip ring are free from debris.



Place the adaptor jaw in the tool and ensure pin is pushed into place to hold jaw.



Check that you have the correct fitting for the application. Water will have a black 'O' ring, gas will have a yellow 'O' ring and High temp. will have a red 'O' ring.



Place the adaptor jaw over the pins on the collar, check that the fitting is still matching up to the insertion depth mark on the tube. Press the trigger on the tool and hold down until piston retracts.



Place fitting onto tube ensuring the mark on the tube lines up with the outer edge of the fitting.



Remove the adaptor jaw from the collar, then the collar from the fitting. Now you can remove the sticker from the fitting to confirm press is complete.

SECTION 14.

TOOL DESCRIPTIONS COPPER PRESS

THE COMPACT CORDLESS AKKU-PRESS ACC

Compact, handy, light. Drive unit with battery only 4.3 kg. Works anywhere, free-hand, overhead, in confined areas. The Akku-Press battery tool ensures superior joints are made when used on Robusto Copper Press fittings.

Combining electro hydraulic drive with powerful battery motor, robust planetary gear, eccentric reciprocating pump and compact hydraulic system enables the Akku-Press to easily join Robusto Copper Press fittings from DN15 right up to DN100.



THE COMPACT CORDLESS MINI-PRESS ACC

Super light, super small, super handy. Drive unit with battery only 2.4 kg. Optimum weight distribution for single-hand operation. The Mini-Press battery tool provides a safe and efficient method of making joints on RobustoCopper 'V' Press fittings. Tool is suitable for pressing RobustoCopper 'V' Press fittings from DN15 to DN32.



THE COMPACT CORDLESS INLINE TOOL

The slimline design of this tool allows for a comfortable one hand operation keeping the other hand free to and position fittings. Drive unit with battery only 2.2 kg. Its unique slimline styling all for easy reaching in tight spaces. The inline tool is capable of pressing Robusto Copper Press fittings from DN15 to DN32.



COMPATIBLE JAWS AND PRESS COLLARS									
BRAND	DN15	DN20	DN25	DN32	DN40	DN50	DN65	DN80	DN100
REMS	YES	YES	YES	YES	YES	YES	YES	YES	YES
VIEGA	YES	YES	YES	YES	YES	YES	YES	YES	YES
KEMPRESS	YES	YES	YES	YES	YES	YES	YES	YES	YES
NOVOPRESS	YES	YES	YES	YES	YES	YES	YES	YES	YES
ROTHENBERGER	YES	YES	YES	YES	YES	YES	YES	YES	YES

SECTION 15.

25 YEAR PRODUCT WARRANTY



Robusto Copper Press fittings are guaranteed against manufacturing defects for a period of 25 YEARS when installed and used in accordance of the Australian and New Zealand Plumbing codes and or the LOCAL or STATE Authority and when installed by a licensed PLUMBER.

Robusto Copper Press fittings complies with the standards as set out in AS3688:2016 Water Supply and Gas systems - Metallic fittings and end connectors.

The policy covers public and products liability of \$50,000,000 per Occurrence and in the aggregate (as applicable), in accordance with the Policy terms and conditions.

This warranty covers Copper Press by Robusto Plumbing Systems.

*This warranty only applies to installations whereby a document can be provided detailing that the installation has been pressure tested to AS/NZS 3500 for water applications and AS/NZS 5601 for gas applications.



SECTION 16.

INSURANCE CERTIFICATE



Allianz Australia Insurance Limited

General & Products Liability Insurance Certificate of Currency

This Certificate of Currency has been issued by Allianz Australia Insurance Limited and confirms that on the Date of Issue the Policy is current for the Period of Insurance and Limit of Liability as shown herein. This Certificate of Currency is issued as a matter of information only and confers no rights upon its holder.

This Certificate of Currency does not form part of the terms and conditions of the Policy and does not amend, extend, replace or alter the terms, conditions, definitions, limitations and exceptions noted therein.

This Certificate of Currency is provided as a summary only of the cover provided and is current only at the Date of Issue. The Policy may be subsequently altered or cancelled in accordance with its terms after the Date of Issue of this notice without further notice to the holder of this notice.

Certain words used in this document and the Policy have special meanings. The Definitions section of the Policy document contains such terms. Please read the Policy wording, the Schedule and any other documents that form part of the Policy for the terms and conditions of cover.

NAMED INSURED:	Forza Global Pty Ltd
POLICY NUMBER:	22-0127810-LCP
PERIOD OF INSURANCE:	22 nd January 2024 to 4pm 22 nd January 2025
LIMIT OF LIABILITY:	\$50,000,000 per Occurrence or per Occurrence and in the aggregate (as applicable), in accordance with the Policy terms and conditions
POLICY WORDING:	Allianz Public & Products Liability POL106BA 10/23
POLICY TERRITORY:	Anywhere in the world (subject to limitations of the Policy)

Andrew Covel
NSW Senior Liability Underwriter

Date of Issue: Issued on 15th February 2024 for and on behalf of Allianz Australia Insurance Limited

SECTION 17.

FREQUENTLY ASKED QUESTIONS

Q. Can you rotate a Robusto Copper Press fitting once installed?

A. No, once pressed, it cannot be rotated.

Q. Can Robusto Copper Press be dismantled and reused?

A. No, this is a permanent installation.

Q. What is the warranty on Robusto Copper Press?.

A. The product has a 25 year limited warranty when in-stalled and used in accordance of the Australian Plumbing code and or the LOCAL or STATE Authority.

Q. Are there any storage issues?

A. Fittings should be stored in a cool dry place in their original packaging. This protects the fittings from contamination, damage and dirt.

Q. Do I use Robusto's recommended tooling?

A. Our tools are designed for use on our systems to ensure the system is warranted. Other approved brand tools may be used should they meet our standards. Check with Robusto Plumbing systems to make sure you are covered.

Q. How is the Robusto Copper Press system installed?

A. You can check how each system is installed by view-ing the installation guides available from the downloads tab on the home page.



ROBUSTO PLUMBING SYSTEMS
WWW.ROBUSTO.COM.AU