

SECTION 7.

CRIMP GAS INSTALLATION INSTRUCTIONS

The following instructions explain the correct installation procedure for Robusto Crimp Gas fittings in conjunction with Robusto Gas pipe.



With a set of pipe cutters /shears cut the pipe at 90° ensuring the pipe is square on the end.



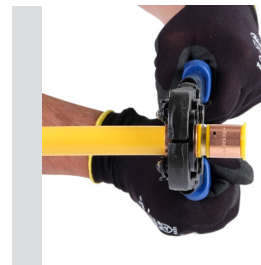
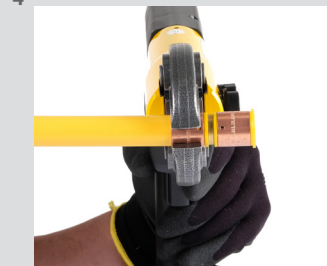
Round the cut end of pipe with the rounding tool.



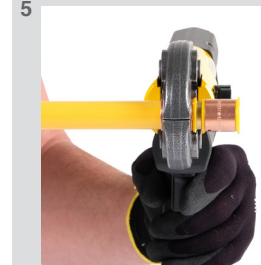
Push fitting onto pipe until pipe is visible through the viewing port on copper ring. This ensures that pipe has been inserted to the correct depth.



Position tool so that the jaws of the tool are in the centre of the copper ring.



Proceed to crimp the fitting until jaws of tool are completely closed.



Once crimp is complete test with gauge. Gauge will slide over copper ring if it has been done correctly.



SECTION 7.

CRIMP GAS INSTALLATION INSTRUCTIONS



Battery Crimping Tool



Manual Crimping Tool